

SCHEDA TECNICA | TECHNICAL DATA SHEET

PRIMERA

PENSILINA | SHELTER

pensilina / shelter

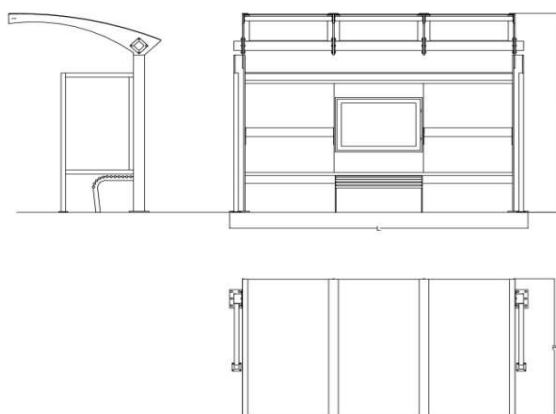


materiali | materials
acciaio | steel

dimensioni | dimensions
L 3200 X P 1500 X H 2400 mm

finiture | finishes

struttura | structure

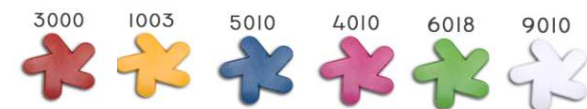


RAL



seduta, tubolare, pannelli
seat, tubular, panels

RAL



SEDE LEGALE - PRODUZIONE - COMMERCIALE - | HEADQUARTERS - FACTORY - SALES | 70132 BARI | VIA D. DE LEONARDIS 24 (Z.I.)

WWW.CITYSI.IT

P. +39 080.8642410 | F. +39 080.8642411 | info@citysi.it - commerciale@citysi.it